

# Project Name

DATA MODEL

## *Document Purpose*

The purpose of this document is clearly outline Entity-Relationship diagrams for all source and target systems involved into the project as well as provide high-level vision of data flow process between them. The intended audience of this document is the project business client(s) and the IT project team.

## Table of Contents

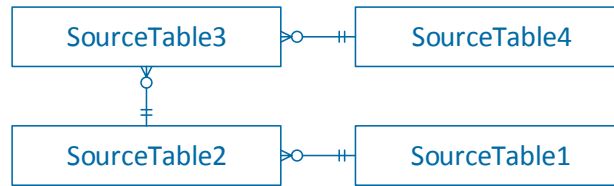
---

1.	Source .....	3
1.1.	Logical Data Model.....	3
1.2.	Physical Data Model.....	3
2.	Data Flow .....	3
3.	Target .....	5
3.1.	Logical Data Model.....	5
3.2.	Physical Data Model.....	5
4.	Target Data Model Details .....	6
4.1.	Dimensions.....	6
4.2.	Facts .....	6
5.	Project Team .....	7
5.1.	Business team .....	7
5.2.	IT team .....	7
6.	Revision History.....	7

# 1. Source

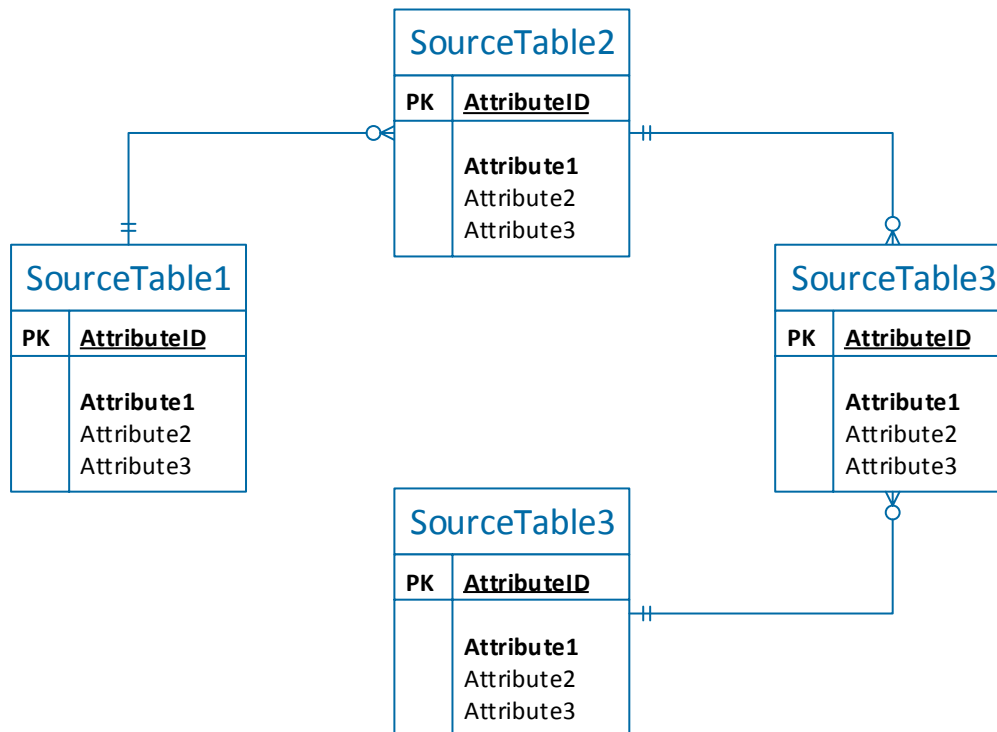
## 1.1. Logical Data Model

[Create a logical data model diagram to the source system]



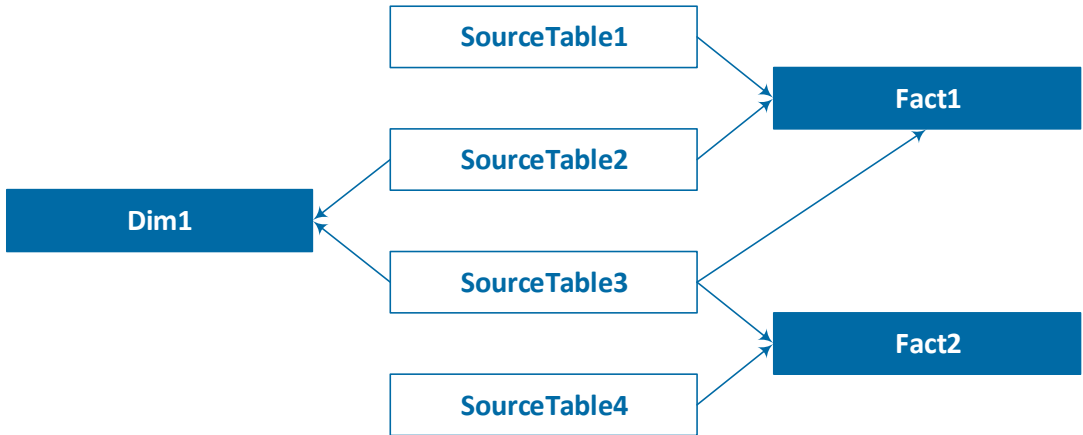
## 1.2. Physical Data Model

[Create a physical data model diagram to the source system]



# 2. Data Flow

[Create data flow diagram that displays relations between source and target]

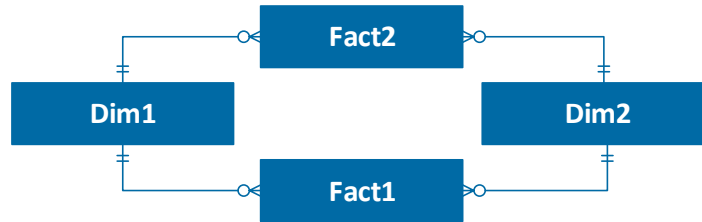


- S Source System Table
- T Target Data Warehouse Table

### 3. Target

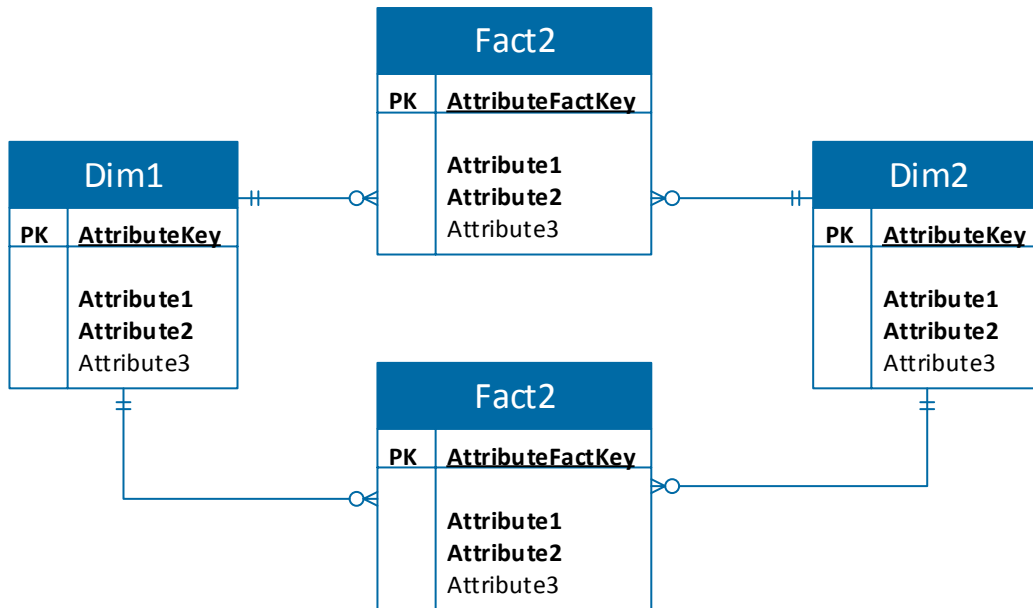
#### 3.1. Logical Data Model

[Create logical data model to the target system]



#### 3.2. Physical Data Model

[Create physical data model to the target system]



## 4. Target Data Model Details

---

[Describe the structure of the target system]

### 4.1. Dimensions

---

Make a short description of attributes in dimension tables]

#### Dim1

Name	Type	Not Null	Unique	Length	Precision	Scale
AttributeKey	int	True	True	10	0	0
Attribute	nvarchar	True	False	50	0	0

#### Dim2

Name	Type	Not Null	Unique	Length	Precision	Scale
AttributeKey	int	True	True	10	0	0
Attribute	int	True	False	10	0	0

### 4.2. Facts

---

[Make a short description of attributes in fact tables]

#### Fact1

Name	Type	Not Null	Unique	Length	Precision	Scale
AttributeFactKey	int	True	True	10	0	0
Attribute	money	False	False	19	4	0

#### Fact2

Name	Type	Not Null	Unique	Length	Precision	Scale
AttributeFactKey	int	True	True	10	0	0
Attribute	money	False	False	19	4	0

## 5. Project Team

---

### 5.1. Business team

---

[List project business team members and their roles]

Role	Name

### 5.2. IT team

---

[List project IT team members and their roles]

Role	Name

## 6. Revision History

---

[Track document changes in the table below. Highlight every change with specific background color within the table and across the document]

Version	Description	Date	Initials
1.0			